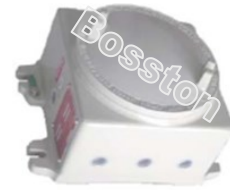


## Application data :

JBR886 enclosures are designed for

- installation of electrical or control devices
- for used in zone 1, 2 and zone 21, 22 hazardous areas.
- They are 2-types of cover; one is a blank cover and another one is a cover with glass window.



## Technical data :

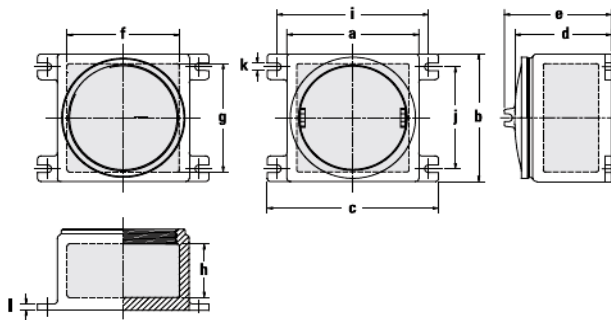
Explosion Protection	: Ex d IIB T6
Conforming to	: Standards IEC 60079-0/1 or UL 60079-1
Marking for test	: Ex II2G
Degree of Protection	: IP66 acc. To IEC 60529
Ambient Temp. (Ta)	: -20 °C to+ 40 °C temp. class T6 -20 °C to+ 55 °C temp. class T5
Protection class for UL.	: Class I, Division 1or 2 Group. C,D Class II, Division 1 or 2 Groups. E,F,G Class III
Protection class for IEC	: Zone1, 21 and Zone 2, 22
Entries thread	: NPT or Metric thread

## Specification:

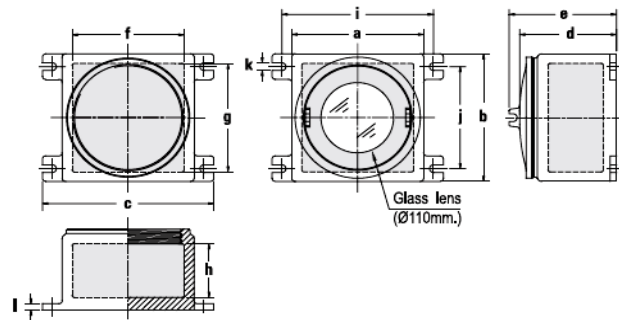
Body and cover	: Marine grade copper-free aluminum alloy with epoxy-polyester powder coated , RAL7032(GREY)
Sealing gasket	: Silicone - 40 °C to +175°C
Lens	: Heat and impact resistant glass

## Catalogue Numbers and Dimensions: in mm.

Empty box with blank cover



Empty box with glass window



Enclosure Type	Cat.,No.	External					Internal			Mounting				Approx. Weight(Kgs.)
		a	b	c	d	e	f	g	h	i	j	k	l	
Empty box with blank cover	JBR 886 B	200	200	260	147	163	170	170	84	230	160	12	10	7.5
Empty box with Dia. 110mm. Glass lens	JBR 886 L	200	200	260	147	163	170	170	84	230	160	12	10	7.5