

PAS Emergency Control Stations (Break-Glass Type)


Bosston

A QUALITY PRODUCT

EXPLOSIONPROOF

For UL.60079-1 Standard Class I,II Div.1 and 2 Groups C,D,E,F and G

For IEC.60079-1 Standard Zone 1 and Zone 2



ISO9001:2008

Technical data

Type of Protection: Ex d IIA T6

Conforming to : Standards IEC 60079-1 or UL 60079-1

Marking for test : Ex II2G

Degree of Protection : IP66 acc.To IEC 60529

Ambient Temp. (Ta) : -20°C to + 55 °C

Type :PAS

Protection class for UL. : Class I, Division1 or 2 Group.C,D

Class II, Division 1 or 2 Groups.E,F,G

Class III

Protection class for IEC : Zone1and Zone 2

Conduit hub : 3/4"x 2 NPT. With Stopping Plug 3/4" x 1

Applications:

The PAS emergency control stations is used
for installation at petroleum refineries, chemical plants, storage
area where hazardous substances are handled.

as " Break-Glass" fire alarm station, in conjunction with audible and/or
visible signaling devices.

indoor or outdoor in damp, wet or corrosive locations.

Features:

- Compact rectangular shape enclosure.
- Three mounting lugs.
- Threaded cover with a glass window.
- Mushroom-head push button, momentary contact.
- Contact rating 3A. 220V.AC. (10A. Rated thermal current).
- Break the glass by hammer to operate push button itself.
- 3/4" inch NPT., dead-end or through-feed conduit hub
- Smooth and well-rounded conduit stop in each hub to protect conductor insulation.

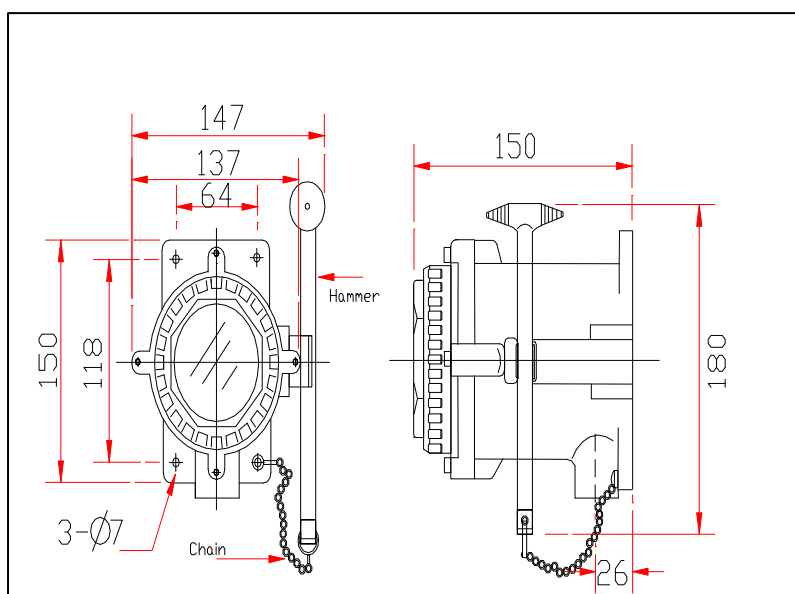
Standard Materials:

- Body and cover - Copper-free aluminium
- Bolts and operating shaft - Stainless steel

Standard Finishes:

- Copper-free aluminium - Epoxy-polyester powder coated.
- Stainless steel - Natural

Dimensions: (in mm.)


PAS-01

