

REQ Receptacles and EPJ Plug Factory Sealed

B
Bosston
A QUALITY PRODUCT

EXPLOSIONPROOF

For UL.60079-1 Standard Class I,II Div.1 and 2 Groups C,D,E,F and G

For IEC.60079-0/1 Standard Zone 1 and Zone 2



ISO9001:2008

Technical data

Type of Protection: Ex d IIA T6
 Conforming to : Standards IEC 60079-0 /1 or UL 60079-1
 Marking for test : Ex II2G
 Degree of Protection : IP66 acc.To IEC 60529
 Rated Voltage : up to 600 V-
 Rated current : up to 63A.
 Electrical rating range : 16 - 63A.
 Type : REQ , RPJ
 Protection class for UL. : Class I, Division1 or 2 Group.C,D
 Class II, Division 1 or 2 Groups.E,F,G
 Class III
 Protection class for IEC : Zone1and Zone 2

Descriptions :

The RPJ receptacle and REQ plug Series are suitable for:
 hazardous locations due to the presence of flammable gasses or vapors.
 installation in petroleum refineries, chemical plants processing of grain,
 flour of starch, and storage areas where hazardous substances
 are handled.
 damp, wet or corrosive locations.
 area where heavy duty receptacles and plugs are necessary.

Features:

- Angle type receptacles, 3/4 inch NPT dead for 16 - 32 AT. And 1.1/4' inch NPT through feet 40 - 63 AT.
- Single gang or two gangs on request. (40 - 63AT. Only one Gang)
Two mounting lugs.
- Receptacles and plugs are equipped with a mechanism which prevents with drawal of plug until the release knob is pressed.
- Plug have extra long grounding poles, make contact first and break contact last for maximum safety.
- Factory sealed receptacles to simplify installation and wiring
external seals are not required.
- The key slot provided in the receptacles engages the key of the plugs
permitting entrance in only one position.

Standard Materials:

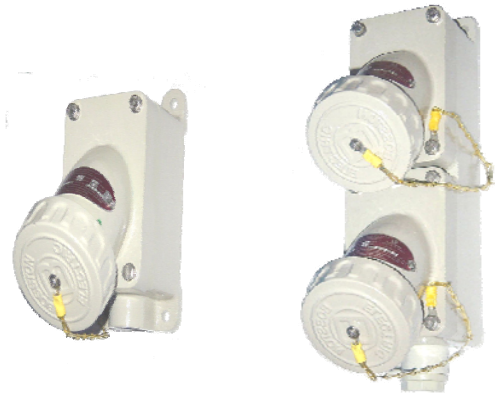
- Receptacle housing, cover and plug exteriors - Copper-free aluminium
- Insulation - Bakelite
- Solid split-type contact - Brass
- Mechanism and bolts - Stainless steel

Standard Finishes:

- Copper-free aluminium - Epoxy-polyester powder
- Brass - Silver plated
- Stainless steel - Natural

ONE GANG

TWO GANG



REQ RECEPTACLES

EPJ PLUG



REQ RECEPTACLES

For 40 - 63 AT.



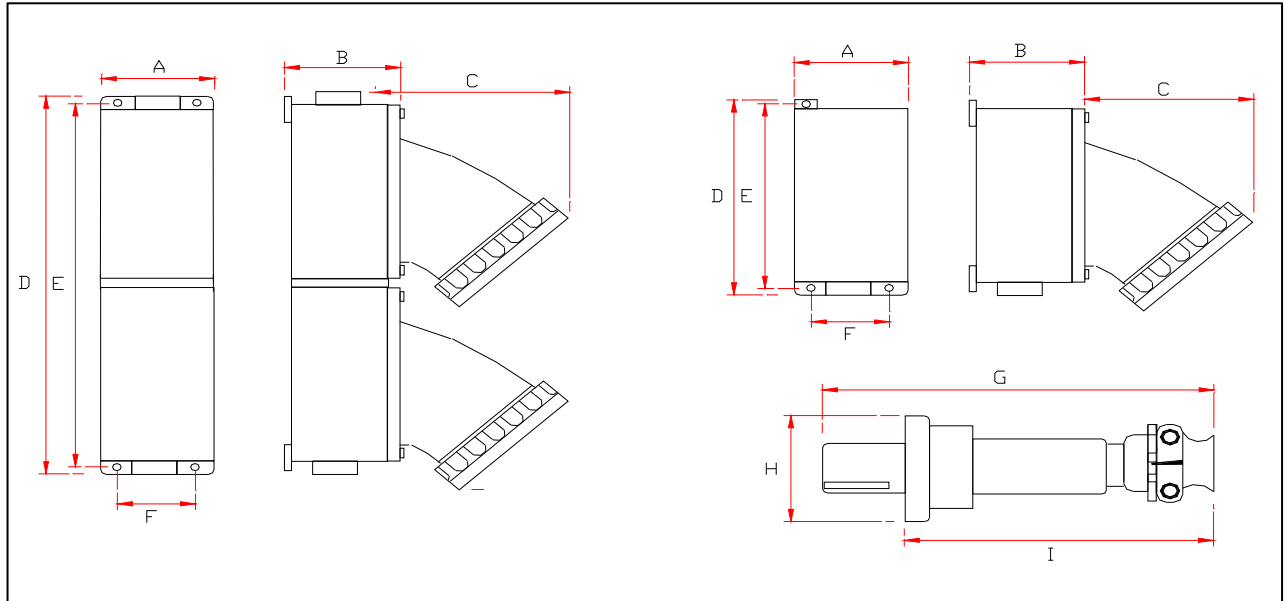
REQ Receptacles and EPJ Plug

Factory Sealed

EXPLOSIONPROOF

For UL.60079-1 Standard Class I,II Div.1 and 2 Groups C,D,E,F and G

For IEC.60079-0/1 Standard Zone 1 and Zone 2



Dimension in mm.

Amp. Trip	ONE GANG									TWO GANG									
	A	B	C	D	E	F	G	H	I	A	B	C	D	E	F	G	H	I	
1PH / 2W / 3P (2P+G)																			
16	90	73	162	177	155	70	153	75	110	90	73	162	350	295	70	153	75	110	
20	90	73	162	177	155	70	153	75	110	90	73	162	350	295	70	153	75	110	
25	90	73	162	177	155	70	153	75	110	90	73	162	350	295	70	153	75	110	
32	90	73	162	177	155	70	153	75	110	90	73	162	350	295	70	153	75	110	
40	160	193	210	100	90	137	252	90	180	-	-	-	-	-	-	-	-	-	
50	160	193	210	100	90	137	252	90	180	-	-	-	-	-	-	-	-	-	
63	160	193	210	100	90	137	252	90	180	-	-	-	-	-	-	-	-	-	
3PH / 3W / 4P (3P+G)																			
16	90	73	162	177	155	70	153	75	110	90	73	162	350	295	70	153	75	110	
20	90	73	162	177	155	70	153	75	110	90	73	162	350	295	70	153	75	110	
25	90	73	162	177	155	70	153	75	110	90	73	162	350	295	70	153	75	110	
32	90	73	162	177	155	70	153	75	110	90	73	162	350	295	70	153	75	110	
40	160	193	210	100	90	137	252	90	180	-	-	-	-	-	-	-	-	-	
50	160	193	210	100	90	137	252	90	180	-	-	-	-	-	-	-	-	-	
63	160	193	210	100	90	137	252	90	180	-	-	-	-	-	-	-	-	-	

EXPLOSIONPROOF

For UL.60079-1 Standard Class I,II Div.1 and 2 Groups C,D,E,F and G

For IEC.60079-0/1 Standard Zone 1 and Zone 2

Phase/Wire/Pole	Hub Size			Receptacle Cat.,No.		Plug Cat..No.
	AT	Pole	NPT(inch)	One Gang	Two Gang	
1PH/2W/3P	16	2	3/4"	REQ 121-16	REQ 221-16	EPJ 2116
(2P + G)	20	2	3/4"	REQ 121-20	REQ 221-20	EPJ 2120
	25	2	3/4"	REQ 121-25	REQ 221-25	EPJ 2125
	32	2	3/4"	REQ 121-32	REQ 221-32	EPJ 2132
	40	2	1"	REQ 121-40	-	EPJ 2140
	50	2	1"	REQ 121-50	-	EPJ 2150
	63	2	1.1/4"	REQ 121-63	-	EPJ 2163
3PH/3W/4P	16	3	3/4"	REQ 131-16	REQ 231-16	EPJ 3116
(3P + G)	20	3	3/4"	REQ 131-20	REQ 231-20	EPJ 3120
	25	3	3/4"	REQ 131-25	REQ 231-25	EPJ 3125
	32	3	3/4"	REQ 131-32	REQ 231-32	EPJ 3132
	40	3	1"	REQ 131-40	-	EPJ 3140
	50	3	1.1/4"	REQ 131-50	-	EPJ 3150
	63	3	1.1/4"	REQ 131-63	-	EPJ 3163